

Team Leipzig

Project co-ordination

Professorship of Primary School Education



Dr. Beatrice
Rupprecht



Anika
Weinhold

Responsible for Early Literacy

Professorship of Primary School Education



Prof. Dr.
Katrin Liebers
Projektleiterin



Helke
Redersborg



Lara
Holland

Responsible for child wellbeing

Professorship of Early Childhood Education



Prof. Dr.
Susanne
Viernickel



Nicole
Reichenbach



Lynn
Kriegs

Further information

... you will find here:



How to contact us

Contact person: Dr. Beatrice Rupprecht

E-Mail: ilea-basis-t@uni-leipzig.de

Phone: +49 341 / 97 31446

Fax: +49 341 / 97 31449



BMBF funding/project number : 01NV2112A
Project period: September 2021 to August 2024

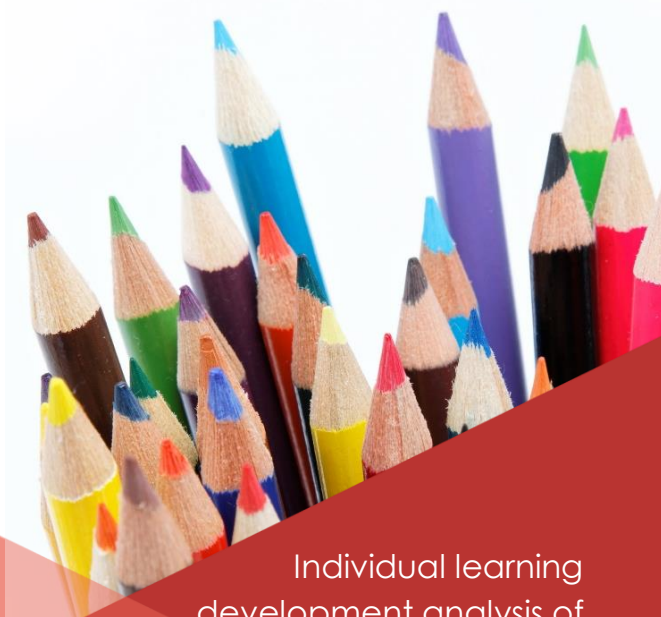
The flyer was translated by: Beatrice Rupprecht
Image sources: © Colourbox, Pixabay



UNIVERSITÄT
LEIPZIG



Europa-Universität
Flensburg



Individual learning
development analysis of
basic skills in inclusive
transition Kindergarten -
Primary school

Collaborative project ILEA-Basis-T

Target group

... are children in their **last year of kindergarten**. The focus is on all children who still **find the preschool requirements difficult**. Our goal is to help the children make a **good transition to school and get off to a good start**. To do this, we want to **strengthen the children** and therefore look at what they need in the kindergarten so that they **feel comfortable**.

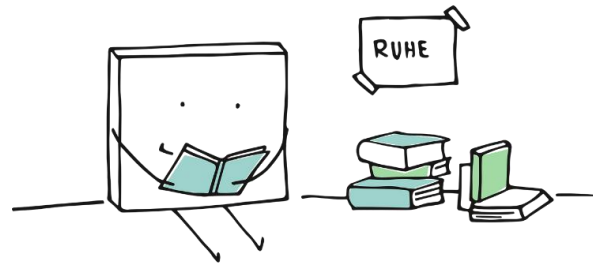
When are we at the kindergarten?

The project will continue until August 2024, during which time we will visit the kindergarten in person from time to time to practise and play with the children. Depending on the option your kindergarten has chosen, we will come during the following periods::

Option 2

The observation sheet and the support and play activities are tried out in your kindergarten in

Winter 2023
Spring/Summer 2023
Autumn 2023
Winter 2023/2024



We would like to

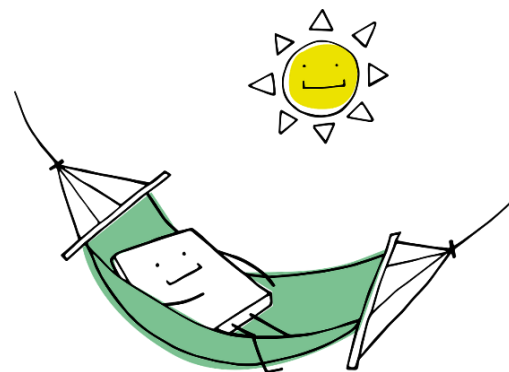
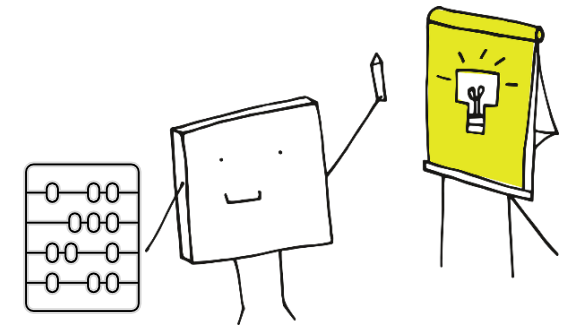
... practice with the children in the areas of **language and mathematics** and also look at how the children are doing in the kindergarten and what they **need to feel comfortable**. For this reason, we would like to develop an **observation sheet** together with the staff of your kindergarten. In order to prepare children well for school, we also consider **targeted support and play activities**.

This is **not a test** and will not be passed on to the school. Your child's data will also **not be shown to anyone outside our project**.

Option 1

Your kindergarten works with us on the development of the observation sheet, as well as the support and play activities. These are then tried out in the kindergarten. For this purpose, we visit the nursery in

Winter 2023
Spring/Summer 2023
Autumn 2023
Winter 2023/2024



Further questions?

Then please feel free to contact us. You will find our contact details on the back page.

We are happy to have your child join us.

